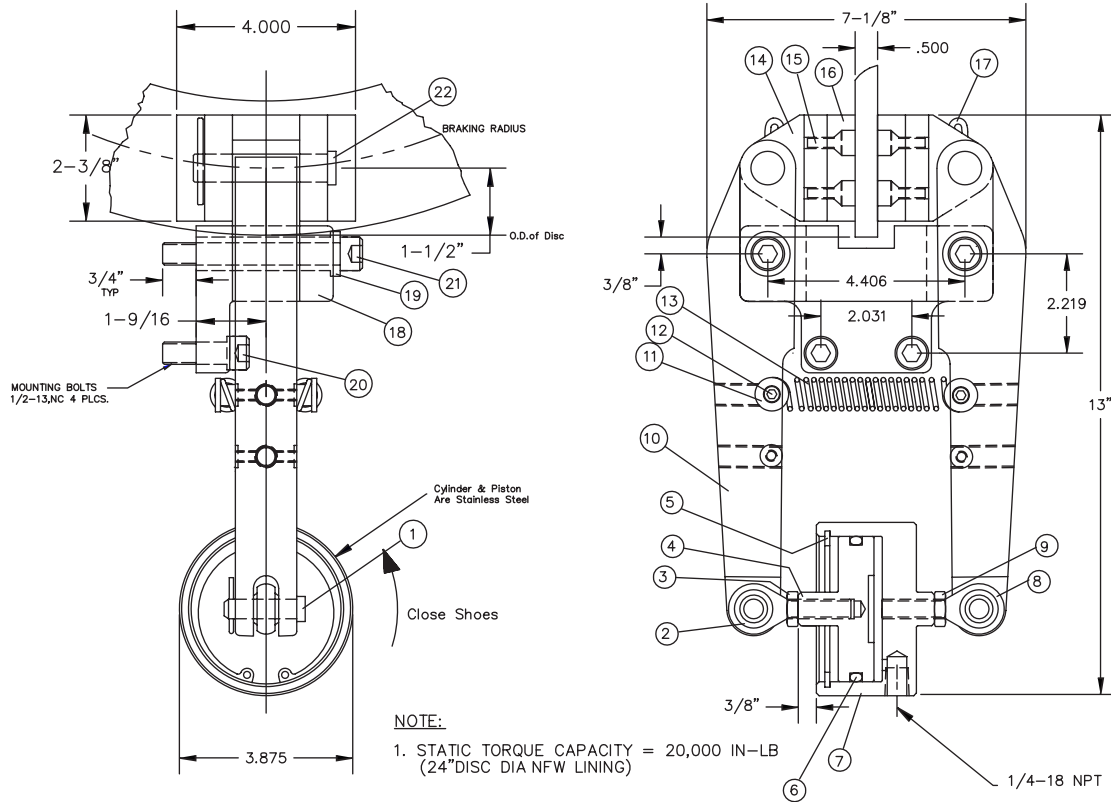


CBA A 20



GENERAL DESCRIPTION

The model CBA A20(B) is an air applied, spring released caliper brake which is used in stopping and holding applications of industrial equipment. This brake has a unique design with an actuator located between the caliper arms. This allows the brake to have a compact physical size relative to its torque capacity.

The maximum air pressure for this brake is 80 psi. The standard caliper brake requires a 1/2" thick disc but can also be used with 3/4" and 1" thick discs by changing shoes. The unit is assembled and ready for use as shipped.

INSTALLATION

Before installing the unit, make sure the brake pads and disc are clean and free of grease or any other pollutant. Slide the brake over the disc. The brake should be aligned to the centerline of the disc. Bolt the brake to a solid base using the 1/2" NC capscrews supplied with the unit. The tightening torque of these bolts is 64 ft-lb.

There is (1) adjustment to set: the cylinder travel. Loosen both the rod end locknuts and rotate the cylinder to close the shoes until they clamp on the disc. Rotate the cylinder in the opposite direction 3 revolutions. Tighten the locknuts to hold this adjustment. Connect the 1/4" NPT air line to the port and apply pressure. With the shoes gripping the disc check the 3/8" rod extension as shown in the drawing. Readjust as required to obtain the 3/8" rod extension. Check the unit several times after in service to be sure the application is working properly.

MAINTENANCE

As the linings wear, the 3/8" piston rod extension will grow. When it is 9/16", the piston will run out of cylinder travel and the braking force will diminish. Adjust the piston extension back to 3/8" when the extension is about 1/2". Check the lining thickness periodically. If the lining is worn 3/16", it should be replaced. The original lining thickness is 5/8".

LINING REPLACEMENT

When the lining is worn 3/16", it should be replaced. Remove the air line from the cylinder. Loosen the locknuts and adjust the cylinder so the rod ends are all the way in with no threads showing. Remove the shoes and replace the linings. Reinstall the shoes and adjust the rod ends to obtain the 3/8" piston rod extension.

ITEM	DESCRIPTION	PART NO.	Qty.
1.	Pin	5840	2
2.	Rod End (LH)	5839	1
3.	Locknut (LH)	5843	1
4.	Piston	5853	1
5.	Snap Ring	5854	1
6.	O Ring*	5855	1
7.	Cylinder	5852	1
8.	Rod End (RH)	5838	1
9.	Locknut (RH)	1118-6	1
10.	Arm	5833	2
11.	Spring Washer	1028	4
12.	Capscrew	1666-2	4
13.	Spring*	5100	2
14.	Caliper Shoe	4956	2
15.	Screw*	4955	8
16.	Friction Lining*	4957X	2
17.	Hairpin	4958	4
18.	Base	4953	1
19.	Bushing	4959	2
20.	CapScrew	1584-7	2
21.	CapScrew	1584-13	2
22.	Pin	4954	2
	Repair Kit (includes * items)	5506K(B)	