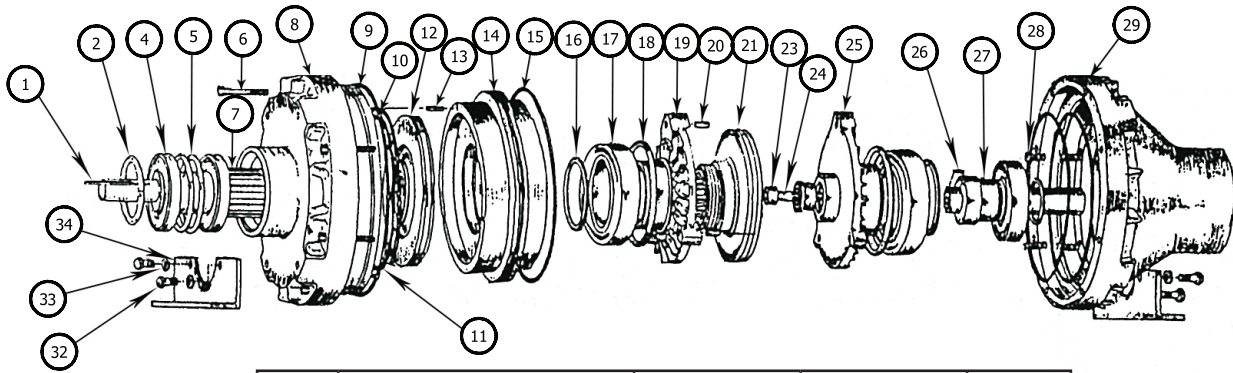


MODEL CAB-SS CLUTCH/BRAKE COMBINATION



| ITEM | DESCRIPTION | 625 | 875 | Qty. |
|------|--------------------------------------|-----------|----------|------|
| | | Part No. | Part No. | |
| 1. | Key | *2621-1 | *2621-1 | 2 |
| 2. | Retaining Ring | *2748 | *2748 | 2 |
| 4. | Bearing | *2747 | *2747 | 3 |
| 5. | Retaining Ring | *2749 | *2749 | 2 |
| 6. | Socket Head Cap Screw | 1656-7 | 1656-7 | 8 |
| 7. | Output Shaft | 2850 | 2811 | 1 |
| 8. | Brake Housing | 2805 | 2805 | 1 |
| 9. | O-Ring | *2798 | *2798 | 1 |
| 10. | O-Ring | *2795 | *2795 | 2 |
| 11. | Scraper Ring | *2775 | *2775 | 2 |
| 12. | Brake Disc Assembly | *3479 | *3479 | 1 |
| 12A. | Brake Disc | 3477 | 3477 | 1 |
| 12B. | Friction lining | 2788 | 2788 | 2 |
| 13. | Roll Pin | 2802 | 2802 | 8 |
| 14. | Piston | 2781 | 2781 | 1 |
| 15. | O-Ring | *2797 | *2797 | 1 |
| 16. | Retaining Ring | *2801 | *2801 | 2 |
| 17. | Bearing | *2794 | *2794 | 2 |
| 18. | Retaining Ring | *2800 | *2800 | 2 |
| 19. | Piston Clutch Plate | 2891 | 2891 | 1 |
| 20. | Dowel Pin | 2808 | 2808 | 3 |
| 21. | Clutch Disc Assembly | *3480 | *3480 | 1 |
| 21A. | Clutch Disc | 3478 | 3478 | 1 |
| 21B. | Friction lining | 2791 | 2791 | 2 |
| 23. | Socket Head Cap Screw | 1377-4 | 1377-4 | 1 |
| 24. | Retainer | 2899 | 2899 | 1 |
| 25. | Housing Clutch Plate | 2893 | 2893 | 1 |
| 26. | Key | 2900 | 2900 | 1 |
| 27. | Input Shaft | 2851 | 2898 | 1 |
| 28. | Spring | *2704 | *2704 | 8 |
| 29. | Clutch Housing | 2903 | 2903 | 1 |
| 32. | Hex Head Cap Screw | 1357-4 | 1357-4 | 4 |
| 33. | Lock Washer | 1019-6 | 1019-6 | 4 |
| 34. | Foot Bracket | 2815 | 2815 | 2 |
| | Repair Kit (Includes parts with*) | 2836K (C) | | |

THE CARLSON COMPANY, INC.

6045 NORTH BROADWAY

WICHITA, KANSAS 67219

USA

PHONE: (316) 744-0481

FAX: (316) 744-2144

E-MAIL: sales@carlsoncompany.com

WEB: www.carlsoncompany.com