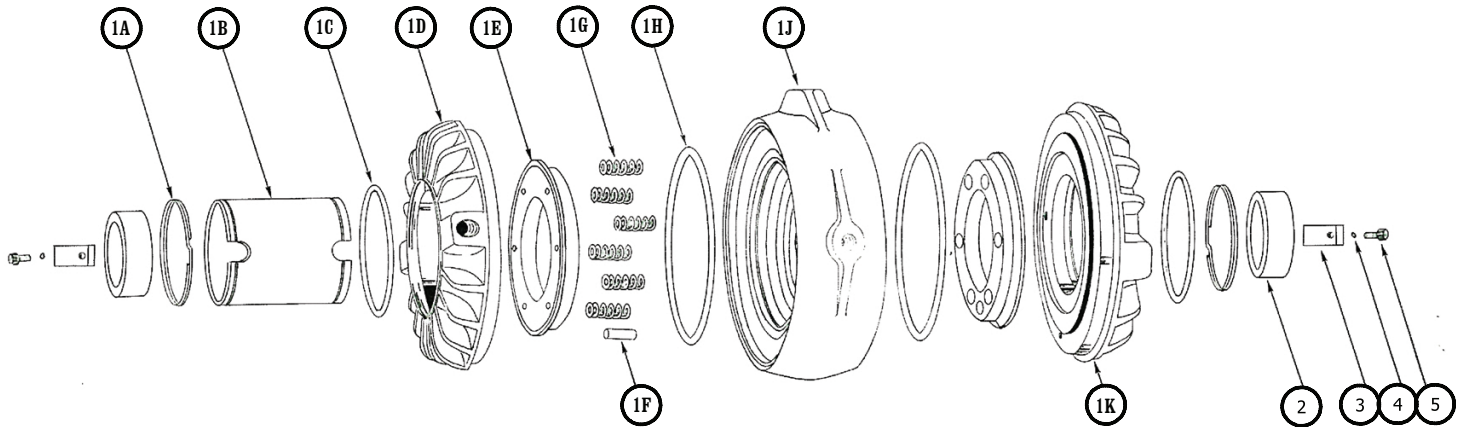


MODEL AIR SHAFT SEAL



		150		250		350		500		700	
	DESCRIPTION	PART NO.	QTY.	PART NO.	QTY.	PART NO.	QTY.	PART NO.	QTY.	PART NO.	QTY.
1.	Air Shaft Seal Sub Assembly	1322-1	1	1322-2	1	1322-3	1	1322-4	1	1322-5	1
IA.	Retaining Ring	1156	2	1164	2	1170	2	1232	2	1191	2
IB.	Sleeve	1383	1	1319	1	1320	1	2049	1	2044	1
IC.	O-Ring (End Ring)	1221	2	1222	2	1168	2	1177	2	1188	2
1D.	End Ring w/Air Outlet	2066	1	2059	1	2061	1	3072	1	3059	1
1E.	Carbon Seal Ring	2012	2	2013-1	2	2004-1	2	3057-1	2	3070-1	2
1F.	Drive Pin	1184-3	1	1184-4	1	1184-5	1	1195-2	1	1195-2	1
1G.	Spring	1153	6	1167	6	1167	6	1194	8	1194	10
1H.	O-Ring (Housing)	1155	2	1163	2	1169	2	1223	2	1190	2
1J.	Housing	2016	1	2017	1	3015	1	3071	1	3058	1
1K.	End Ring w/out Air Outlet	2065	1	2058	1	2060	1	3073	1	3060	1
2.	Adaptor Bushing	1330-*	2	1331-*	2	1343-*	2	1368-*	2	1371-*	2
3.	Drive Key	1113-*	2	1160-*	2	1304-*	2	1388-*	2	1532-*	2
4.	Lockwasher	1019-2	2	1019-2	2	1019-3	2	1019-4	2	1019-4	2
5.	Socket Head Screw	1020	2	1020	2	1021	2	1666-4	2	1666-4	2

*Bore sizes must be specified when ordering this part.

THE CARLSON COMPANY, INC.

6045 NORTH BROADWAY

WICHITA, KANSAS 67219

USA

PHONE: (316) 744-0481

FAX: (316) 744-2144

E-MAIL: sales@carlsoncompany.com

WEB: www.carlsoncompany.com